



CARLISLE & CO.

WALLCOVERINGS

— EST. 1998 —

NATURALS

BOTANICA SISAL

Celebrating organic textures, this classic natural sisal showcases a smart and savvy palette that can act as a backdrop for any décor.

LX1163 TAUPE



SPECIFICATIONS

WIDTH:	36" (91,44 cm) Trimmed
REPEAT:	None
MATCH:	Random
COMPOSITION:	Sisal on Paper Backing
FLAME RATING:	ASTM E84 Class A
MAINTENANCE:	Soft Dry Brush
BOLT SIZE:	8 yd (7,32 m)

ADDITIONAL INFORMATION

Unique hanging instructions accompany all products. Hiring a professional installer for these specialty products is recommended.

Color and texture may vary slightly due to the organic quality of the substrate material. These subtle differences should be celebrated as the mark of being hand-made.

ORDERING:

PRICING:	Priced by the linear yard.
MINIMUM ORDER:	8 yd (7,32 m)
ORDER INCREMENT:	8 yd (7,32 m)
STOCK:	USA

Memos available upon request.

MORE COLORS



LX1160 Sandstone



LX1161 Wicker



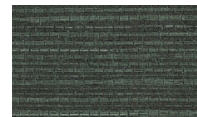
LX1162 Straw



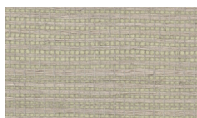
LX1163 Taupe



LX1164 Hazelnut



LX1165 Forest



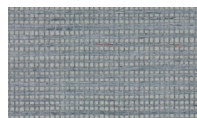
LX1166 Fog



LX1167 Ash



LX1168 Juniper



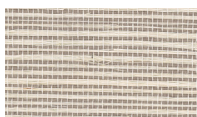
LX1169 Stone



LX1170 Steel Blue



LX1171 Twilight



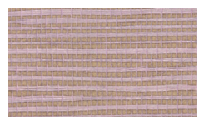
LX1172 Pebble



LX1173 Amethyst



LX1174 Dove



LX1175 Orchid



LX1176 Onyx



LX1177 Mulberry

TO THE TRADE

US MARKETS

Exclusively through Holly Hunt
hollyhunt.com

CANADA MARKETS

Crown Surface Solutions
crownsurfacesolutions.com

INTERNATIONAL MARKETS

800.220.6730
carlisleco.com