



# CARLISLE & CO.

WALLCOVERINGS

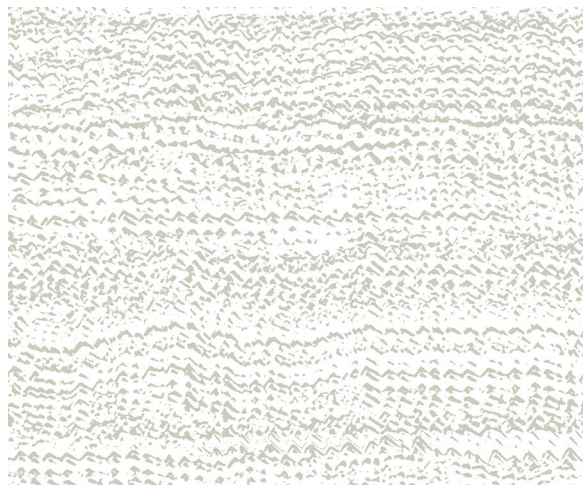
— EST. 1998 —

## DIGITAL PRINTS

# NAVARO

Earth and mineral formations combine to inspire this organic textural design. The beauty of natural cork is resplendent when enriched with a metallic foil backing. This design can be paired with Nagano mural.

## LX1538 PEBBLE



## SPECIFICATIONS

WIDTH:	36" (91,44 cm) Untrimmed Trims to 33.5" (85,09 cm)
REPEAT:	25.25" (64,13 cm)
MATCH:	Straight
COMPOSITION:	Printed Cork on Paper Backing
FLAME RATING:	ASTM E84 Class A
MAINTENANCE:	Soft Dry Brush
BOLT SIZE:	8 yd (7,32 m)

## ADDITIONAL INFORMATION

Unique hanging instructions accompany all products. Hiring a professional installer for these specialty products is recommended.

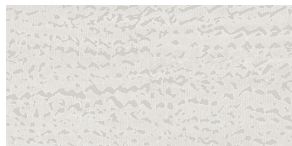
Color and texture may vary slightly due to the organic quality of the substrate material. These subtle differences should be celebrated as the mark of being hand-made.

## ORDERING:

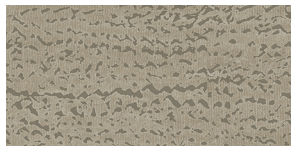
PRICING:	Priced by the linear yard.
MINIMUM ORDER:	8 yd (7,32 m)
ORDER INCREMENT:	8 yd (7,32 m)
STOCK:	USA

Memos available upon request.

## MORE COLORS



LX1535 Oatmeal



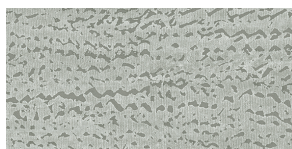
LX1536 Taupe



LX1537 Terracotta



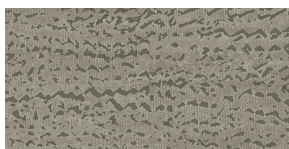
LX1538 Pebble



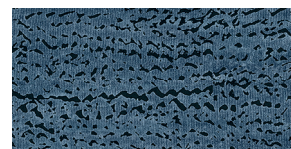
LX1539 Ash



LX1540 Charcoal



LX1541 Dove



LX1542 Steel Blue

## TO THE TRADE

### US MARKETS

Exclusively through Holly Hunt  
hollyhunt.com

### CANADA MARKETS

Crown Surface Solutions  
crownsurfacesolutions.com

### INTERNATIONAL MARKETS

800.220.6730  
carlisleco.com