



# CARLISLE & CO.

WALLCOVERINGS

— EST. 1998 —

## HIGH PERFORMANCE VINYL

# IN NEED OF TWEED

This tailored and versatile design replicates a fine woven linen, merging beauty with the durability of high-performance vinyl. An essential texture complimenting any interior space.

## LX1321 PEBBLE



## SPECIFICATIONS

WIDTH:	55.5" (140,97 cm) Untrimmed Trims to 54" (137,16 cm)
REPEAT:	Random
MATCH:	Non-Reversible
BACKING:	Non-Woven
FLAME RATING:	ASTM E84 Class A
WEIGHT:	20 oz. Type II Vinyl
FINISH:	Antimicrobial Technology
MAINTENANCE:	Scrubable/Washable

## FEATURES

Non-Woven backed vinyl contains recycled content.

HPD & EPD Available

Printed with water-based inks.

Passes California CDPH Standard Method (Section 01350)

Can contribute towards LEED points.



Advanced antimicrobial technology made with EPA-registered ingredients.

## ADDITIONAL INFORMATION

Unique hanging instructions accompany all products. Hiring a professional installer for these specialty products is recommended.

## ORDERING:

PRICING:	Priced by the yard.
MINIMUM ORDER:	15 yd (13,7 m)
ORDER INCREMENT:	5 yd (4,5 m)
STOCK:	USA

Memos available upon request.

## MORE COLORS



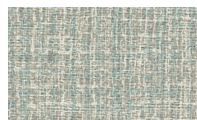
LX1320 Porcelain



LX1321 Pebble



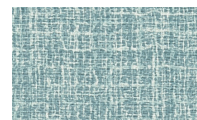
LX1322 Taupe



LX1323 Juniper



LX1324 Wicker



LX1325 Cerulean



LX1326 Fog



LX1327 Dove



LX1328 Sky



LX1329 Anchor



LX1330 Stone



LX1331 Onyx

## TO THE TRADE

### US MARKETS

Exclusively through Holly Hunt  
hollyhunt.com

### CANADA MARKETS

Crown Surface Solutions  
crownsurfacesolutions.com

### INTERNATIONAL MARKETS

800.220.6730  
carlisleco.com